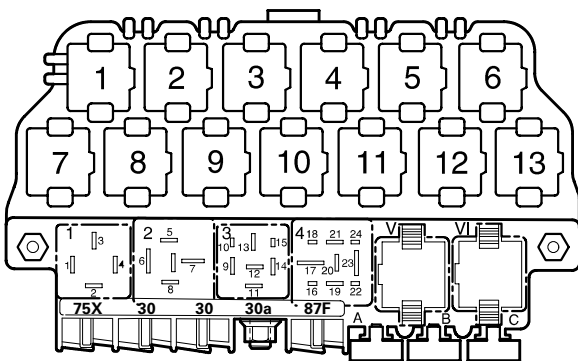


# Radio System,

from September 1997

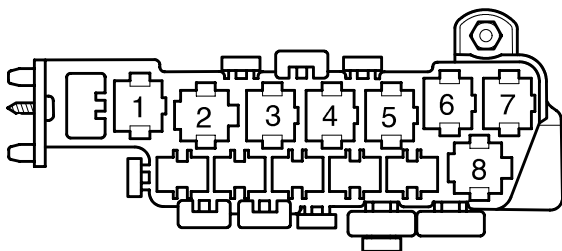
Deviate relay location and fuseplacements as well as the locations of multiple connectors see section "component locations".



97-20676

Relay location on the thirteenfold auxiliary relay panel, above relay panel:

Relay panel:



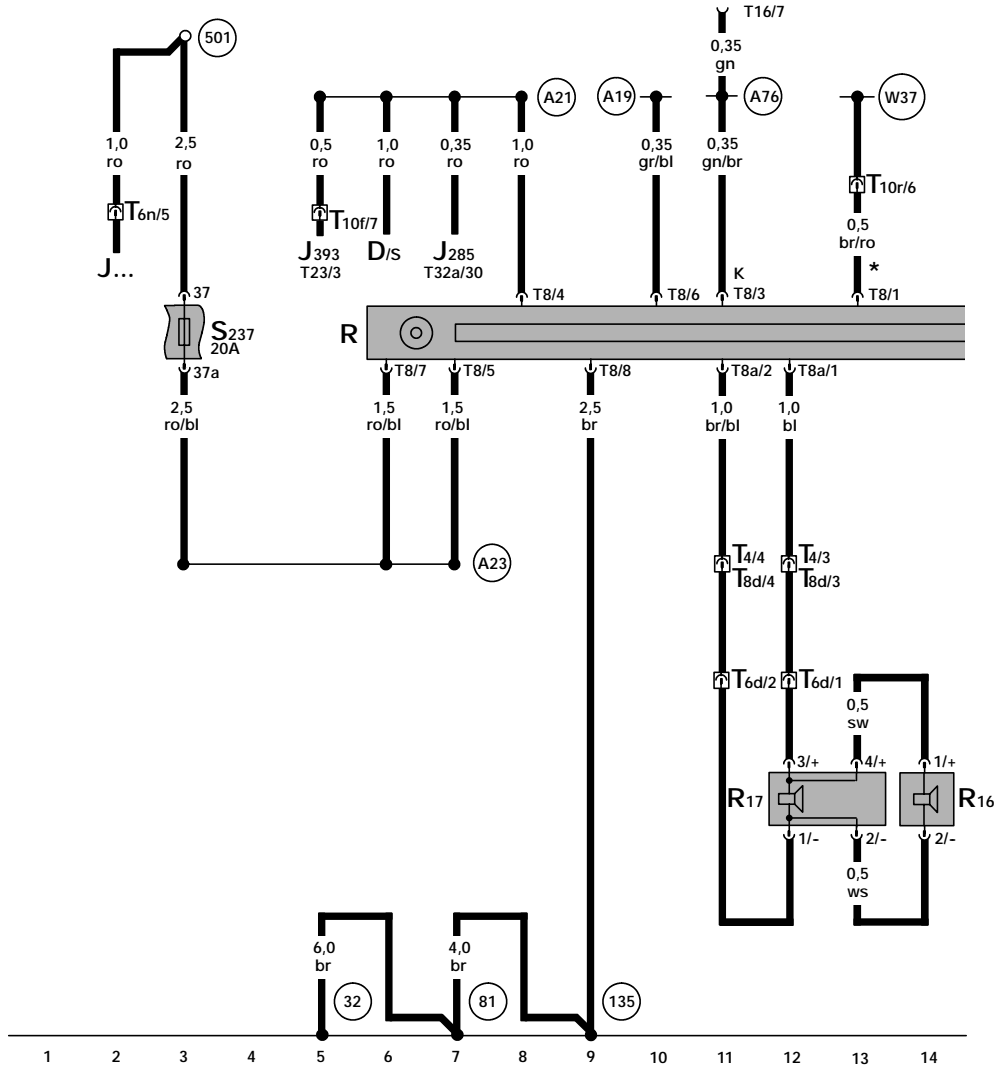
97-20515

Relay location on the eightfold auxiliary relay panel, behind relay panel:

**Fuse colors**

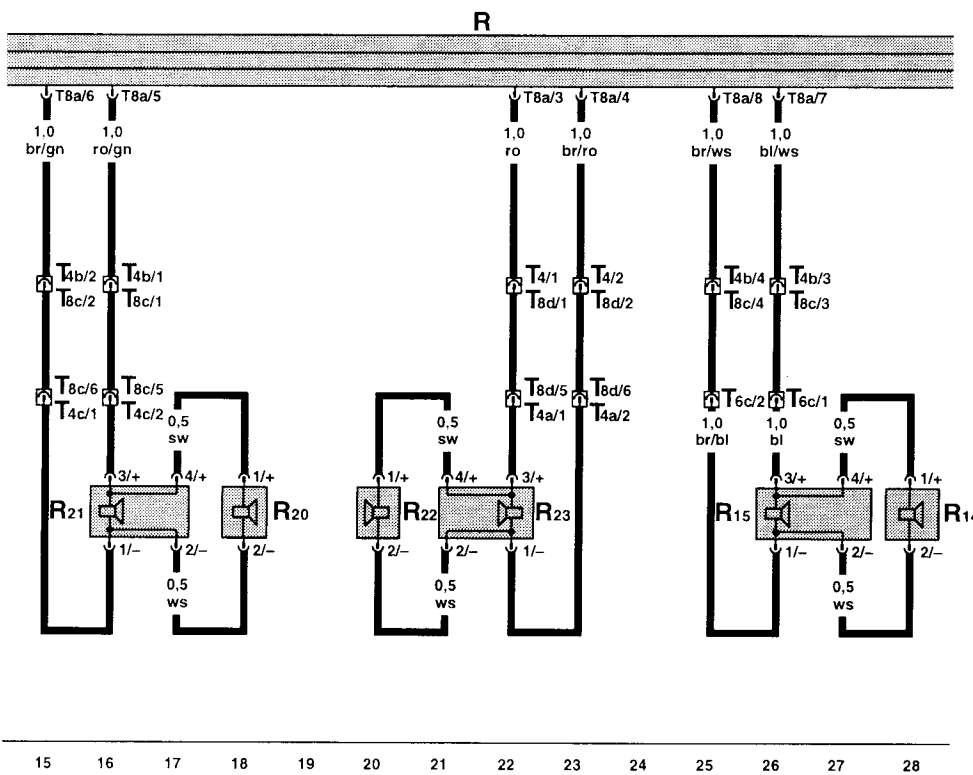
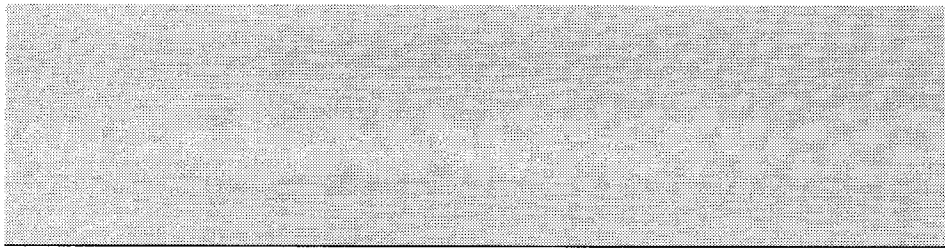
- 30 A - green
- 25 A - white
- 20 A - yellow
- 15 A - blue
- 10 A - red
- 7,5 A - brown
- 5 A - beige

Note: Number in parentheses indicates production control number stamped on relay housing.



ws = white  
 sw = black  
 ro = red  
 br = brown  
 gn = green  
 bl = blue  
 gr = grey  
 li = violet  
 ge = yellow

- |      |   |     |  |
|------|---|-----|--|
| J... | - Engine Control Module (ECM)   | 32  | - Ground connection, behind instrument panel, left                 |
| R    | - Radio   | A76 | - Connector (K-diagnosis wire), in instrument panel wiring harness |
| R16  | - Right Rear Tweeter, in right rear door                                    | 81  | - Ground connection -1-, in instrument panel wiring harness        |
| R17  | - Right Rear Woofer, in right rear door                                     | 135 | - Ground connection -2-, in instrument panel wiring harness        |
| S237 | - Fuse 37 in fuse holder  | 501 | - Screw Connection -2- (30), on relay panel                        |
| T4   | - 4-Pin Connector, black, connector station A-pillar, right                 | A19 | - wire connection (58d), in instrument panel wiring harness        |
| T6d  | - 6-Pin Connector, red, on B-pillar, right                                  | A23 | - wire connection (30a), in instrument panel wiring harness        |
| T6n  | - 6-Pin Connector, red, on protective housing for control module            | W37 | - Connector (alarm system), in wiring harness floor                |
| T8   | - 8-Pin Connector, black, on radio  |     |  |
| T8a  | - 8-Pin Connector, brown, on radio  |     |  |
| T8d  | - 8-Pin Connector, black, connector station A-pillar, right                 |     |  |
| T10v | - 10-Pin Connector, violett, connector station A-pillar, right              |     |  |
| T16  | - 16-Pin Connector, Data Link Connector (DLC), below instrument panel, left |     |  |

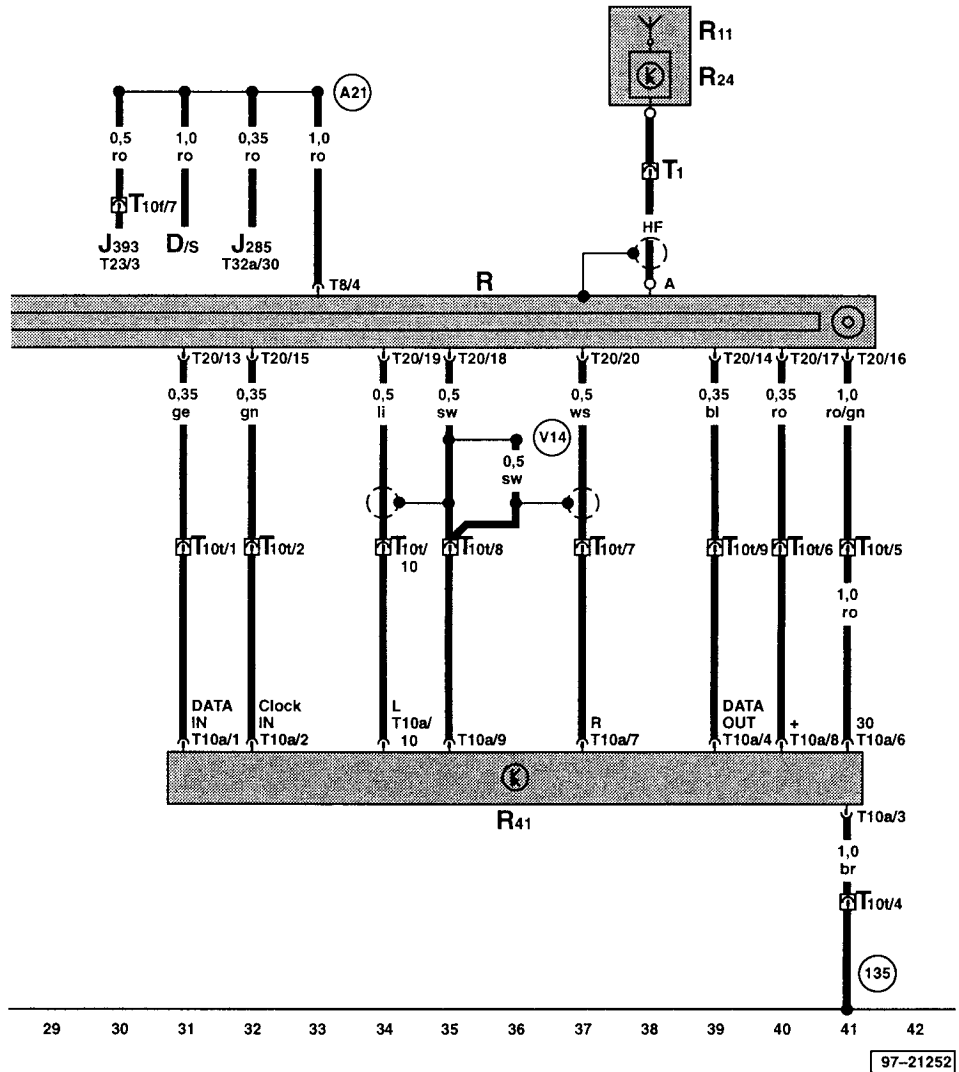
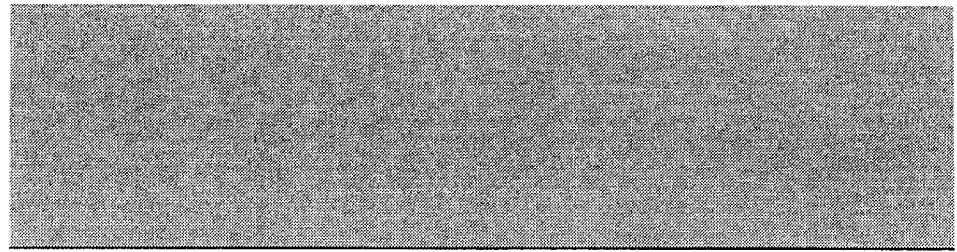


ws = white  
 sw = black  
 ro = red  
 br = brown  
 gn = green  
 bl = blue  
 gr = grey  
 li = violet  
 ge = yellow

97-21213

- R - Radio
- R14 - Left Rear Tweeter, in left rear door
- R15 - Left Rear Woofer, in left rear door
- R20 - Left Front Tweeter, in driver's door
- R21 - Left Front Woofer, in driver's door
- R22 - Right Front Tweeter, in passenger's door
- R23 - Right Front Tweeter, in passenger's door
- T4 - 4-Pin Connector, black, connector station A-pillar, right
- T4a - 4-Pin Connector, black, connector station A-pillar, right
- T4b - 4-Pin Connector, black, connector station A-pillar, left
- T4c - 4-Pin Connector, black, connector station A-pillar, left
- T6c - 6-Pin Connector, red, on B-pillar, left
- T8a - 8-Pin Connector, brown, on radio

- T8c - 8-Pin Connector, black, connector station A-pillar, left
- T8d - 8-Pin Connector, black, connector station A-pillar, right



ws = white  
 sw = black  
 ro = red  
 br = brown  
 gn = green  
 bl = blue  
 gr = grey  
 li = violet  
 ge = yellow

97-21252

- D - Ignition/Starter Switch
- J285 - Control module with indicator unit in instrument panel insert
- J393 - Central control module for comfort system
- R - Radio
- R11 - Antenna
- R24 - Antenna Amplifier
- R41 - CD Changer Unit
- T1 - 1-Pin Connector, black, below console
- T8 - 8-Pin Connector, black, on radio
- T10a - 10-Pin Connector, red, on CD Changer Unit
- T10f - 10-Pin Connector, blue, connector station A-pillar, left
- T10t - 10-Pin Connector, red, connector station A-pillar, right
- T20 - 20-Pin Connector, on radio

- T23 - 23-Pin Connector, on central control module for comfort system
- T32a - 32-Pin Connector, blue, on instrument cluster
- (135) - Ground connection -2-, in instrument panel wiring harness
- (A21) - wire connection (86s), in instrument panel wiring harness
- (V14) - wire connection (shielding), in CD-changer wiring harness