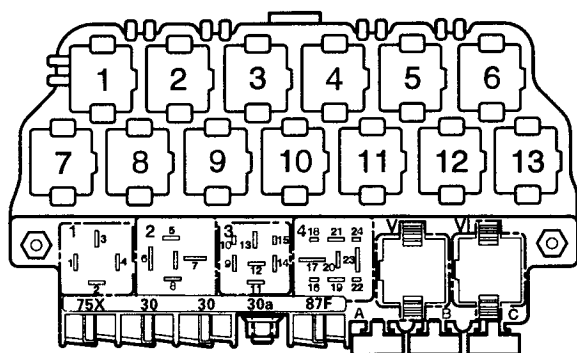


Cruise Control,

from September 1997

- 1,8L- Engine – Motronic Multiport Fuel Injection (MFI)/110 kW, code AEB,
- 2,8L- Engine – Motronic Multiport Fuel Injection (MFI)/142 kW, code AHA,

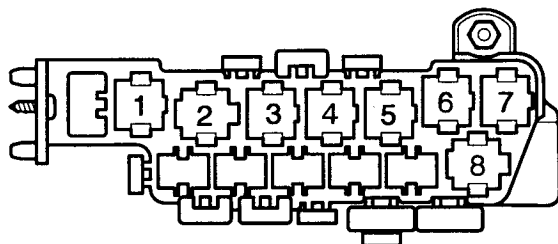
Deviate relay location and fuseplacements as well as the locations of multiple connectors see section "component locations".



97-20676

Relay location on the thirteenfold auxiliary relay panel, above relay panel:

Relay panel:



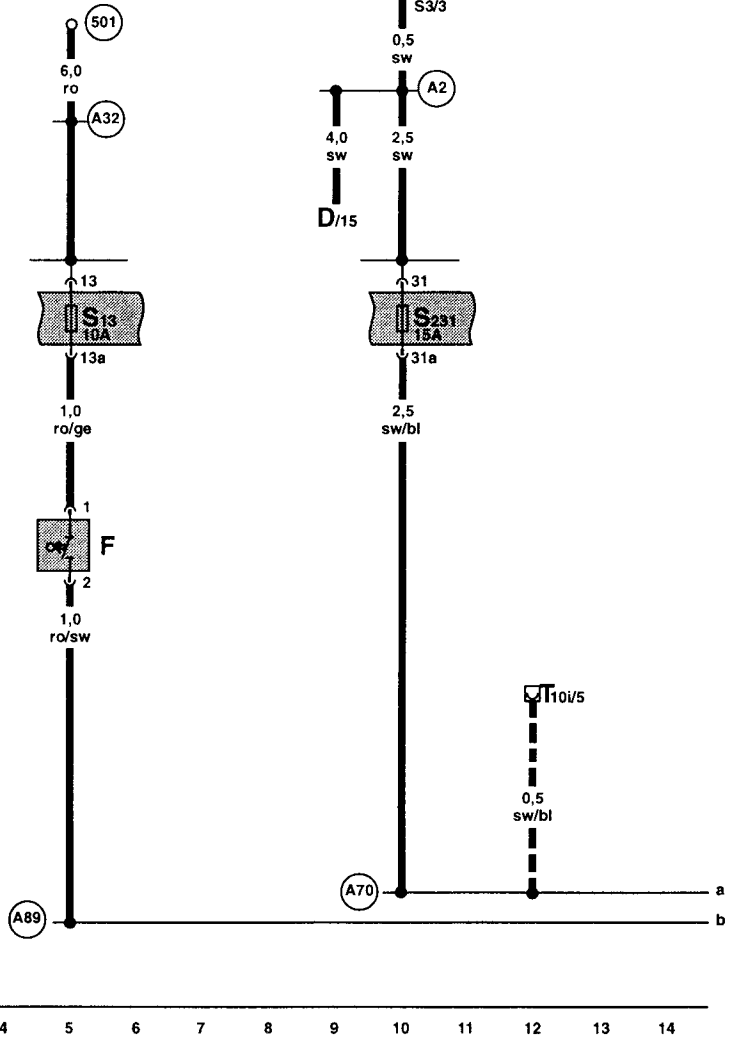
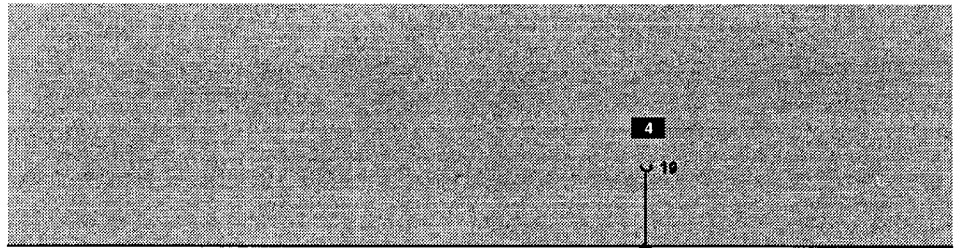
97-20515

Relay location on the eightfold auxiliary relay panel, behind relay panel:

Note: Number in parentheses indicates production control number stamped on relay housing.

Fuse colors

30 A – green
 25 A – white
 20 A – yellow
 15 A – blue
 10 A – red
 7,5 A – brown
 5 A – beige



97-21075

D - Ignition/Starter Switch

F - Brake Light Switch

S13 - Fuse 13 in fuse holder

S231 - Fuse 31 in fuse holder

T10i - 10-Pin Connector, blue, connector station
A-pillar, right, automatic transmission

(501) - Screw connection -2- (30), on relay panel

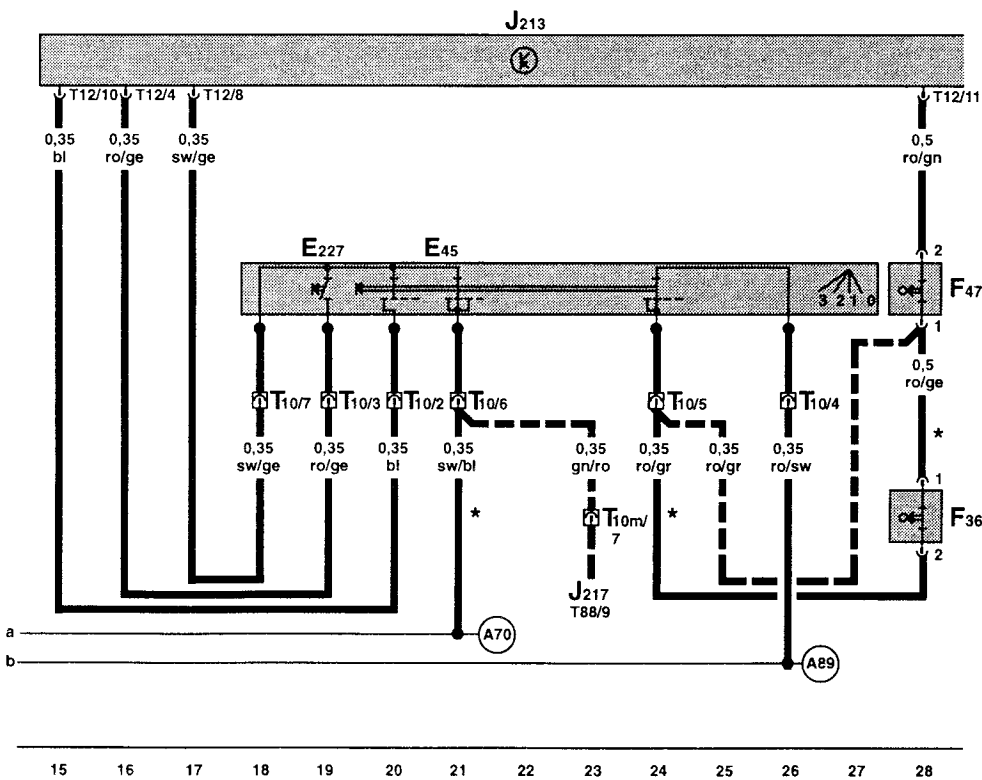
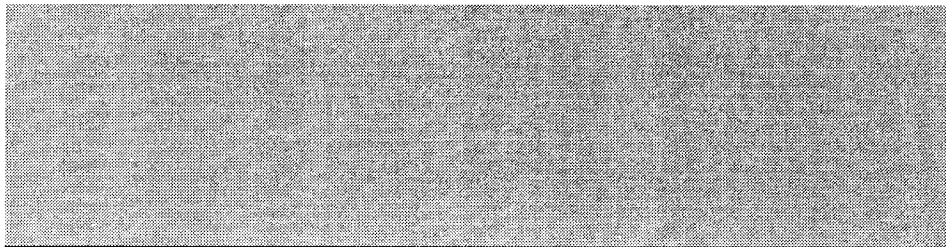
(A2) - plus connection (15), in instrument panel wiring harness

(A32) - plus connection (30), in instrument panel wiring harness

(A70) - Connector (15a, fuse 231), in instrument panel wiring harness

(A89) - Connector (54), in instrument panel wiring harness

--- automatic transmission only

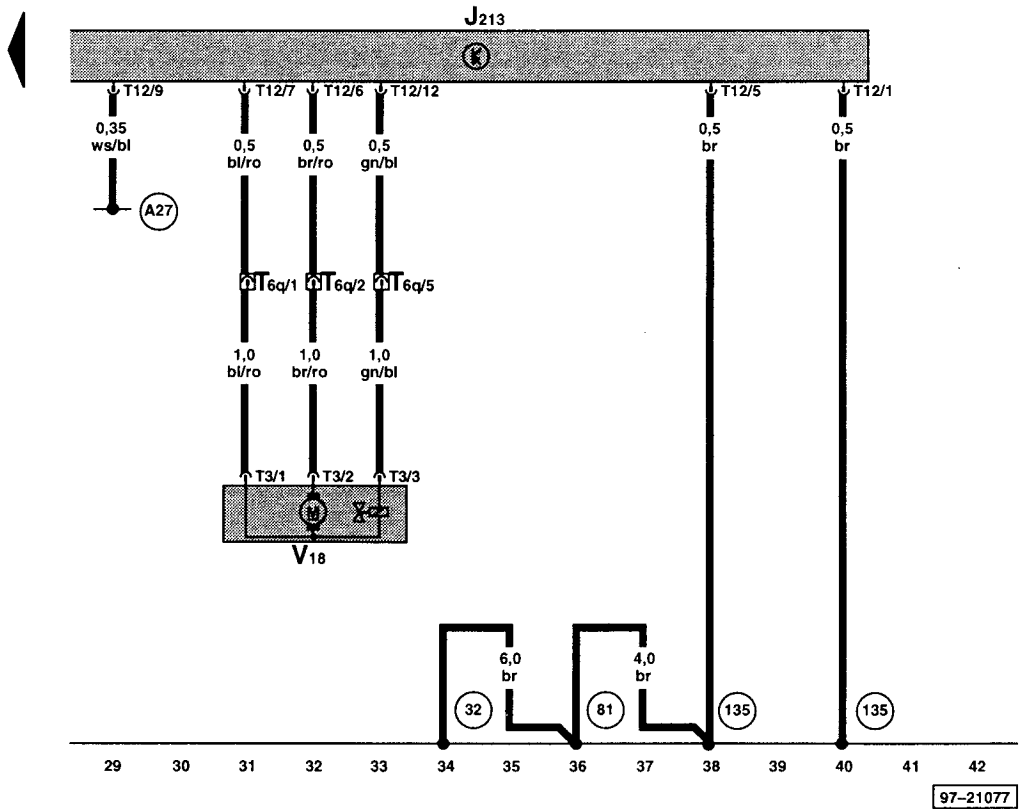
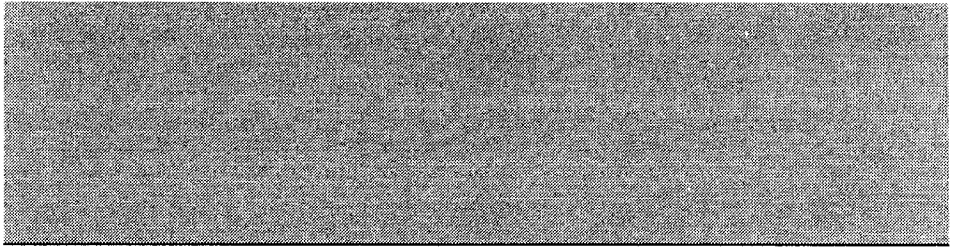


ws = white
 sw = black
 ro = red
 br = brown
 gn = green
 bl = blue
 gr = grey
 li = violet
 ge = yellow

97-21076

- E45 – Cruise Control Switch (ON/OFF)
 position 0 = OFF
 position 1 = OFF save
 position 2 = ON
 position 3 = RES
- E227 – Cruise Control Push Button (SET)
- F36 – Clutch Vacuum vent Valve Switch
- F47 – Brake Vacuum Vent Valve Switch for cruise control
- J213 – Cruise Control, Control Module, behind instrument panel, right, behind driver's side airbag
- J217 – Transmission Control Module (TCM)
- T10 – 10-Pin Connector, black, near steering column, right
- T10m – 10-Pin Connector, brown, connector station A-pillar, right

- T12 – 12-Pin Connector, on Cruise Control, Control Module
- T88 – Connector, 88 point, on Transmission Control Module (TCM), 5 speed automatic transmission
- (A70) – Connector (15a, fuse 231), in instrument panel wiring harness
- (A89) – Connector (54), in instrument panel wiring harness
- - - automatic transmission only
- * – manual transmission only



J213 – Cruise Control, Control Module, behind instrument panel, right, behind driver’s side airbag

T3 – 3-Pin Connector

T6q – 6-Pin Connector, black, connector station A-pillar, left

T12 – 12-Pin Connector, on Cruise Control, Control Module

V18 – Cruise Control Vacuum pump

32 – Ground connection, behind instrument panel, left

81 – Ground connection -1-, in instrument panel wiring harness

135 – Ground connection -2-, in instrument panel wiring harness

A27 – wire Connection (vehicle speed signal), in instrument panel wiring harness